

Finfloor

MAINTENANCE AND CLEANING
INSTRUCTIONS

Maintenance and cleaning

The surface of Finfloor flooring is protected for a long life and high wear resistance. The product is sold finished and does not need any work done on it. However, there are a number of recommendations and instructions to follow to maintain and clean it.

- The ideal conditions for avoiding problems with the boards' dimensions and static loads are: 50-70% RH and +/-20°C. Use a humidifier if needed.

- Do NOT varnish, sand, polish etc. the laminate flooring. Products with wax, soap or polish may leave behind residues.

- Never fix the laminate flooring to the base floor or other construction elements (with glue, nails, fixed door stops etc).

- Protect the feet of furniture and chairs with felt or plastic pads and regularly check their condition and cleanliness.

- Use chairs with soft wheels that won't damage the flooring (Type W, in accordance with regulation DIN 68131), or failing that, use a polycarbonate mat to avoid direct contact with the floor (the wheels should be kept clean).

- The use of doormats at exterior door entrances is recommended in order to prevent dirt, dust, gravel, water etc. coming in from the street.

- Use a broom, cleaning pad, vacuum cleaner with brush for parquet flooring or a completely wrung out mop. Never use abrasive cleaning aids (wire wool, scouring pads etc.) or cleaning machines to clean the laminate flooring.

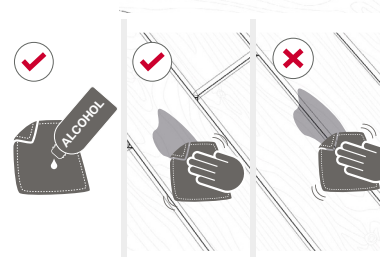
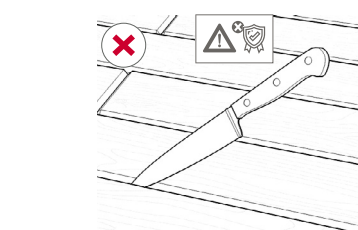
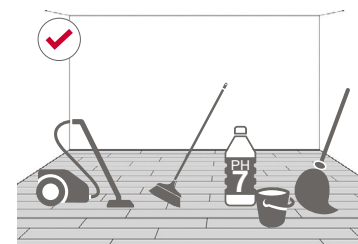
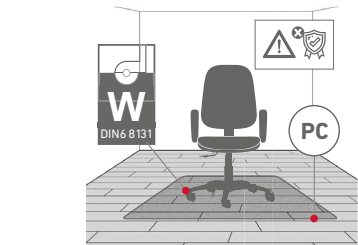
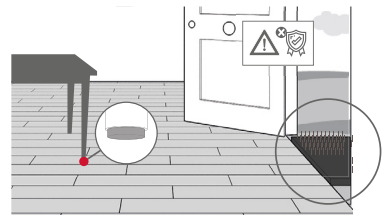
- Use non-abrasive, pH neutral detergents preferably with Ecolabel.

- To clean grooved products, do not use sharp or pointed, abrasive, cutting, wet etc. instruments. Use a vacuum cleaner with a brush for parquet flooring. If this is not enough, use a cloth slightly dampened in water.

- To eliminate stubborn stains on the surface (NEVER in joints or groves), use slightly diluted acetone or alcohol for household use. Clean with water afterwards.

- Special care should be taken in areas with pets (urine can damage the laminate flooring; avoid it and clean it immediately).

- If any water is spilled, it should be dried immediately to prevent any liquid remaining.



Finfloor